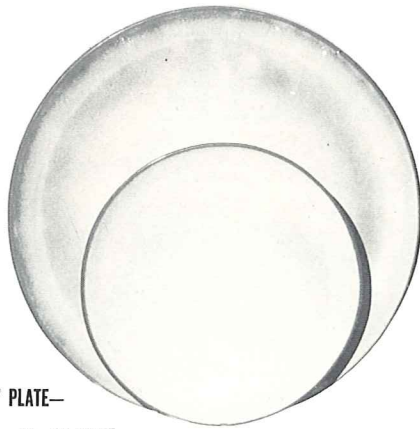


*4K—BUTTER DISH—



6F—10" PLATE—

6G—7" PLATE—



*6B—SUGAR WITH LID—



*6A—9 OZ. CREAMER—



*6VT—2½ QT. TUREEN—



6C—CUP—

6E—5" WELLED SAUCER—



*6H—SALT & PEPPER—



*6V—2½ QT. BAKER—



*5LC—6 OZ. JUICE—



*5L—12 OZ. TUMBLER—



*6CL—DOUBLE COFFEE—



*80—2 QT. PITCHER—



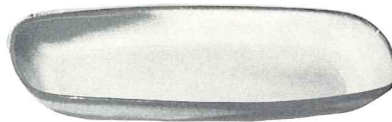
*6VS—1½ QT. BAKER—



*6T—6 CUP TEAPOT—



*81—1 QT. PITCHER—



*5QS—13" STEAK PLATE (SHALLOW PLATTER)—

*6P—11" STEAK PLATE—

*5PS—9" TRAY—



*6J—2 CUP TEAPOT—



*6S—TWO SPOUT GRAVY—



*6U—18 OZ. BAKER FOR TWO—
A COVERED CANDY DISH

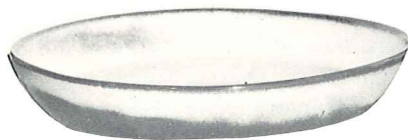


*6P—6 OZ. BEAN POT—



6X—14 OZ. CHILI SOUP—

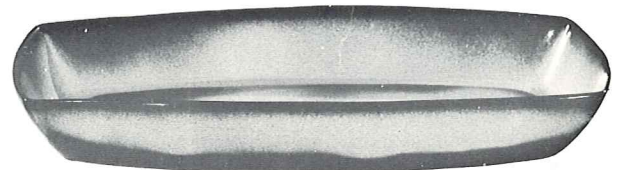
6XS—10 OZ. FRUIT—



*91—10" BAKING DISH—

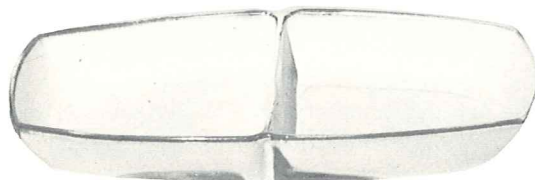


*6N—1 QT. BOWL—

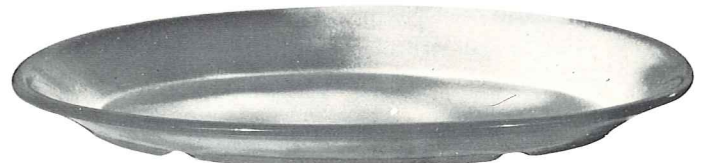


5P—17" DEEP PLATTER—

5Q—13" DEEP PLATTER—



5QD—13" DIVIDED BOWL—



TP—17" OVAL PLATTER—

THIS PAGE AVAILABLE IN PEACH GLOW, PRAIRIE GREEN, WOODLAND MOSS AND WHITE SAND EXCEPT WHERE NOTED *

* AVAILABLE IN ALL COLORS—ADD 50% FOR FLAME

SIZES ARE APPROXIMATE AND MAY VARY SLIGHTLY.